

## Technical Bulletin #15

**To:** Coulometrics Support Personnel  
**From:** Engineering Dept.  
**Date:** 08-16-04  
**Subject:** How to Change the Voltage Selection in models 3200,5011,5012,5014, 5014S  
Coulometers

---

### Voltage Selection

To change selected voltage:

Open cover, using small blade screwdriver or similar tool.

Set aside cover/fuse block assembly.

Pull voltage selector card straight out of housing, using indicator pin

Orient selector card so that desired voltage is readable at the bottom.

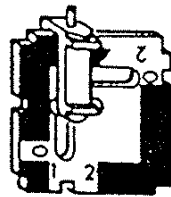
Orient indicator pin to point up when desired voltage is readable at bottom.

(Note: when indicator pin is fixed, successive voltages are selected by rotating the card 90° clockwise.)

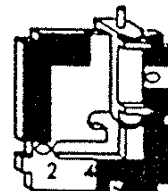
Insert voltage selector card into housing, *printed side of card facing toward IEC connector*, and edge containing the desired voltage first

Replace cover, and verify that indicator pin shows the desired voltage

### Voltage Selector Card Orientation

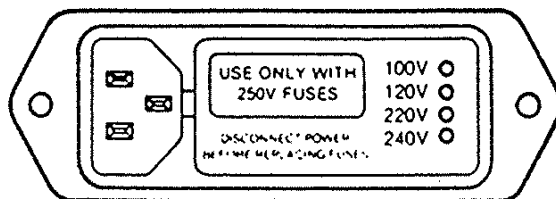


120V



180°

240V



#### FUSE

120V SERVICE CM125-010 1.5 AMP  
240V SERVICE CM125-004 1.0 AMP